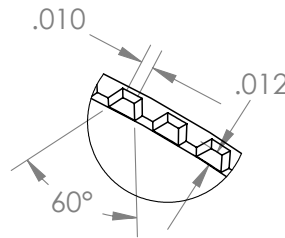
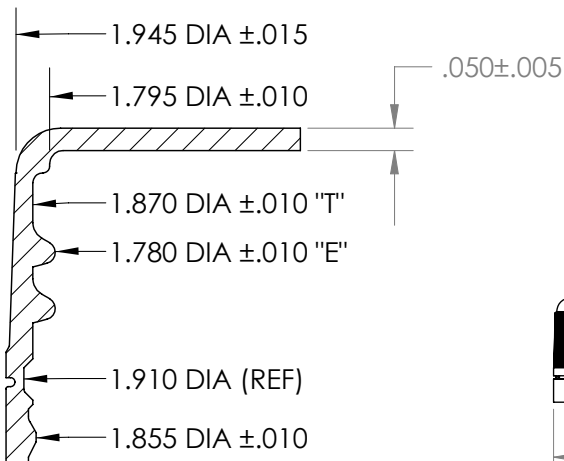
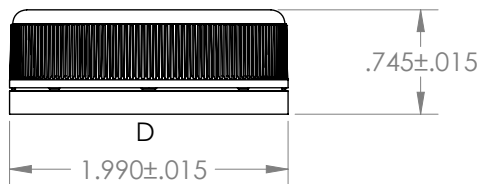


DL-48



149 KNURLS



MARKETS

- Food and Beverage
- Medical and Pharma
- Automotive
- Industrial
- Nutraceutical

PRODUCT APPLICATIONS

- Hot Fill / Cold Fill Tea
- Hot Fill / Cold Fill Juice
- Non-Carbonated Beverages
- Motor Oil
- Vitamin

ADVANTAGES

- Can be run across multiple bottle materials
- Multiple lining options for various filling applications
- Customizable for your brand
- Band separation for tamper evidence

CLOSURE SPECS

- Weight: 5.5gms
- Diameter: 48mm
- Height: 18.92mm

DISC LINING MATERIAL OPTION

- SS-222 Foam
- EVA
- Foil Induction Seal

NECK FINISH

- HDPE-1787
- PET-1763
- Glass-1768

CLOSURE SEAL OPTION

- Disc Liner

BOTTLE TYPE

- Glass
- PET
- HDPE

RESIN TYPE

- PP

FILLING PROCESS

- Cold Fill
- Ambient
- Hot Fill

CAP PACKING SPECS (PIECES)

- Carton: 950
- Pallet: 25,650 (3 layers)
- Truck Load: 1,539,000 (60 pallets)
- Carton: 14.5 x 12.875 x 14.75



RIGID