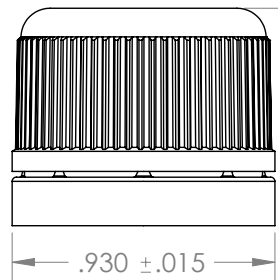
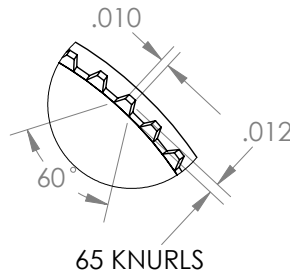
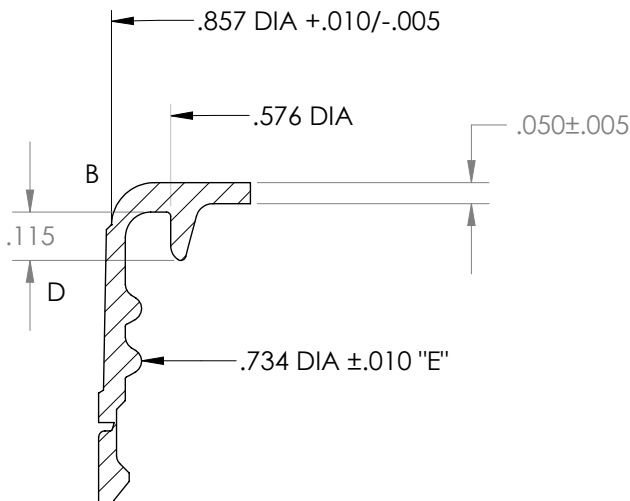


DL-20



MARKETS

- Food and Beverage
- Automotive
- Industrial

PRODUCT APPLICATIONS

- Condiment
- Automotive Products
- Industrial Products

ADVANTAGES

- Can be run across multiple bottle materials
- Customizable for your brand
- Band separation for tamper evidence

CLOSURE SPECS

- Weight: 1.9gms
- Diameter: 20mm
- Height: 19.05mm

NECK FINISH

- HDPE-1787
- PET-1763
- Glass-1768

CLOSURE SEAL OPTION

- Linerless Plug Seal

BOTTLE TYPE

- Glass
- PET
- HDPE

RESIN TYPE

- PP

FILLING PROCESS

- Cold Fill
- Ambient
- Hot Fill

CAP PACKING SPECS (PIECES)

- Carton: 4,300
- Pallet: 116,100 (3 layers)
- Truck Load: 6,966,000 (60 pallets)
- Carton: 15.5 x 12.875 x 14.75

