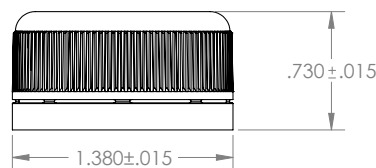
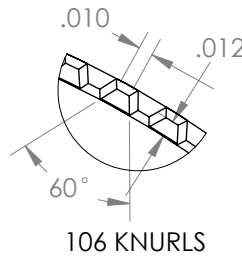
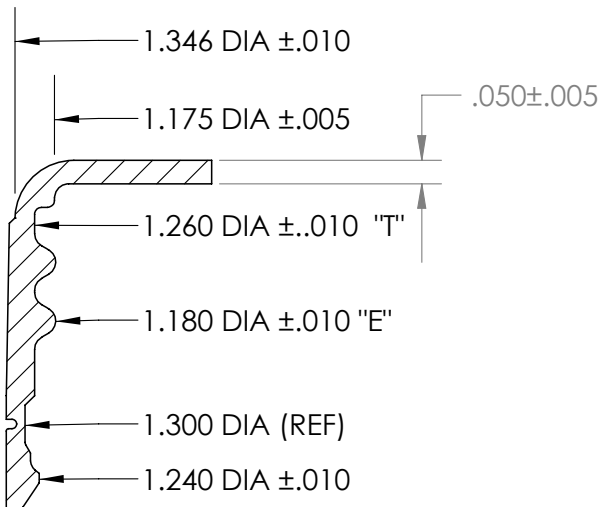


## DL-33



### MARKETS

- Food and Beverage
- Medical and Pharma
- Automotive
- Industrial
- Nutraceutical

### PRODUCT APPLICATIONS

- Kombucha
- Non-Carbonated Beverages
- Automotive Products
- Industrial Products
- Vitamin

### ADVANTAGES

- Can be run across multiple bottle materials
- Multiple lining options for various filling applications
- Customizable for your brand
- Band separation for tamper evidence

### CLOSURE SPECS

- Weight: 3.3gms
- Diameter: 33mm
- Height: 18.54mm

### DISC LINING MATERIAL OPTION

- SS-222 Foam
- EVA
- Foil Induction Seal

### NECK FINISH

- PE-1787
- PP-1763
- Glass-1768

### CLOSURE SEAL OPTION

- Disc Liner

### BOTTLE TYPE

- Glass
- PET
- HDPE

### RESIN TYPE

- PP

### FILLING PROCESS

- Cold Fill
- Ambient
- Hot Fill

### CAP PACKING SPECS (PIECES)

- Carton: 2,592
- Pallet: 54,432 (3 layers)
- Truck Load: 3,265,920 (60 pallets)
- Carton: 19.25 x 12.75 x 14.5

